

IpCop 1.4.9 uzstādīšana

Ievietojiet instalācijas CD disku diskdzinī un piestartējiet datoru no CD.
Uz uzaicinājumu

```
boot:
```

variet nospiegt taustiņu Enter, lai veiktu noklusēto uzstādīšanas procedūru, jeb ievadiet

```
boot: nousborpcmcia
```

lai izvairītos no USB un PCMCIA iekārtu skenēšanas.

Izmēģiniet šo variantu ja kaut kādu iemeslu dēļ nav izdevusies noklusētā procedūra.

```
ISOLINUX 2.11 2004-08-16 Copyright (C) 1994-2004 H. Peter Anvin

Welcome to IPCop, Licensed under GNU GPL version 2.

PLEASE BEWARE! This installation process will kill all
existing partitions on your PC or server. Please be aware
of this before continuing this installation.

-----
---- ALL YOUR EXISTING DATA WILL BE DESTROYED ----
-----

Press RETURN to boot IPCop default installation.

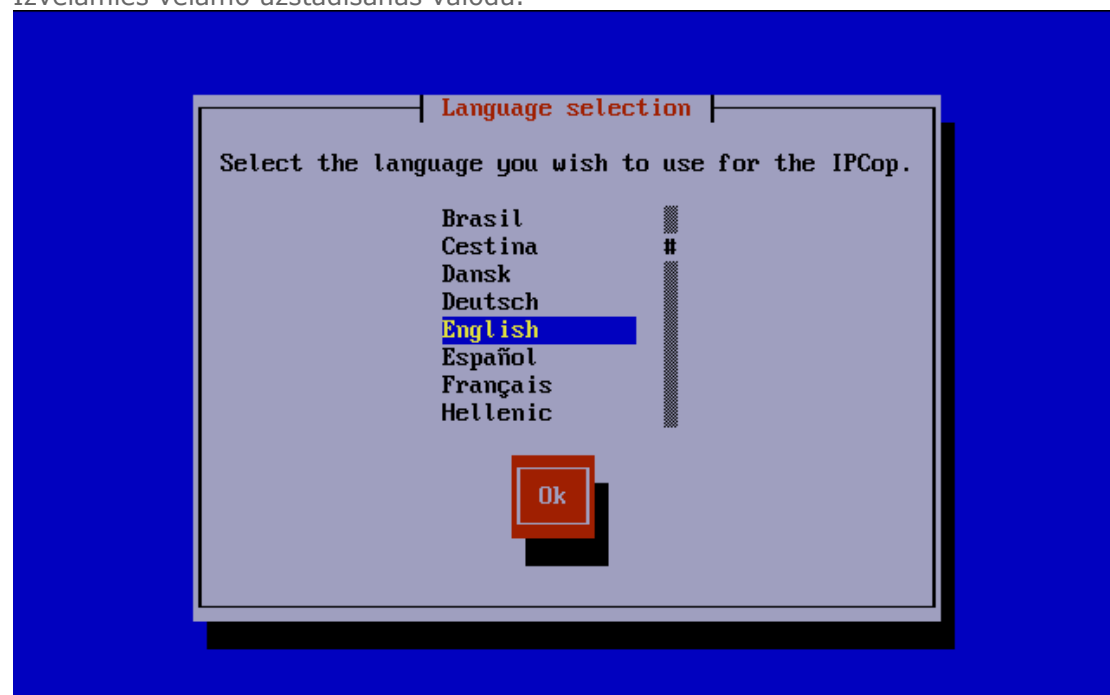
Or, if you are having trouble you can try these options...
Type:  nopcmcia to disable PCMCIA detection
       nousb to disable USB detection
       nousborpcmcia to disable both PCMCIA & USB detection
       dma to enable ide dma (SiS chipset workaround)

boot: nousborpcmcia
```

Tālāk notiek ierastā Linux kodola atpakošana un uzstādīšanai nepieciešamo komponentu palaišana.

```
ide0: BM-DMA at 0xffa0-0xffa7, BIOS settings: hda:DMA, hdb:pio
ide1: BM-DMA at 0xffa8-0xffaf, BIOS settings: hdc:DMA, hdd:pio
hda: Virtual HD, ATA DISK drive
hdc: Virtual CD, ATAPI CD/DVD-ROM drive
ide0 at 0x1f0-0x1f7,0x3f6 on irq 14
ide1 at 0x170-0x177,0x376 on irq 15
hda: attached ide-disk driver.
hda: 33554304 sectors (17180 MB) w/64KiB Cache, CHS=2088/255/63
hdc: attached ide-cdrom driver.
hdc: ATAPI DVD-ROM drive, 128kB Cache
Uniform CD-ROM driver Revision: 3.12
Partition check:
hda: unknown partition table
Initializing Cryptographic API
NET4: Linux TCP/IP 1.0 for NET4.0
IP Protocols: ICMP, UDP, TCP
IP: routing cache hash table of 512 buckets, 4Kbytes
TCP: Hash tables configured (established 4096 bind 8192)
NET4: Unix domain sockets 1.0/SMP for Linux NET4.0.
RAMDISK: Compressed image found at block 0
Freeing initrd memory: 3244k freed
VFS: Mounted root (ext2 filesystem).
Freeing unused kernel memory: 76k freed
init started: BusyBox v0.60.5 (2005.10.03-04:30+0000) multi-call binary
```

Izvēlamies vēlamo uzstādīšanas valodu.



Sveicināti IPCop v1.4.9 uzstādīšanā!

IPCop v1.4.9 - The Bad Packets Stop Here

IPCop v1.4.9 - The Bad Packets Stop Here

Welcome to the IPCop installation program. Selecting Cancel on any of the following screens will reboot the computer.

Ok

<Tab>/<Alt-Tab> between elements | <Space> selects

Uzstādīšanas metode - no CD diska.

IPCop v1.4.9 - The Bad Packets Stop Here

Select installation media

IPCop can be installed from multiple sources. The simplest is to use the machines CDROM drive. If the computer lacks a drive, you may install via another machine on the LAN which has the installation files available via HTTP. In this case the network driver diskette will be required.

CDROM
HTTP/FTP

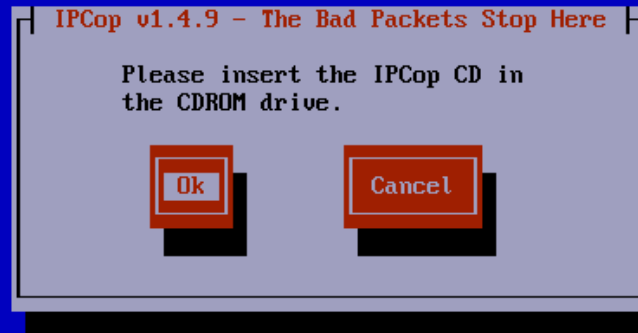
Ok

Cancel

<Tab>/<Alt-Tab> between elements | <Space> selects

Atgādinājums par to, ka jāieliek CD disks diskdzinī.

IPCop v1.4.9 - The Bad Packets Stop Here



<Tab>/<Alt-Tab> between elements | <Space> selects

Pēdējais solis, kad var atteikties no uzstādīšanas pirms cietā diska formatēšanas. Pēc šī soļa visa informācija uz cietā diska ir neatgriezeniski zaudēta.

IPCop v1.4.9 - The Bad Packets Stop Here



<Tab>/<Alt-Tab> between elements | <Space> selects

Notiek diska sadalīšana sadaļās un sadaļu formatēšana.

IPCop v1.4.9 - The Bad Packets Stop Here

IPCop v1.4.9 - The Bad Packets Stop Here

Partitioning disk...

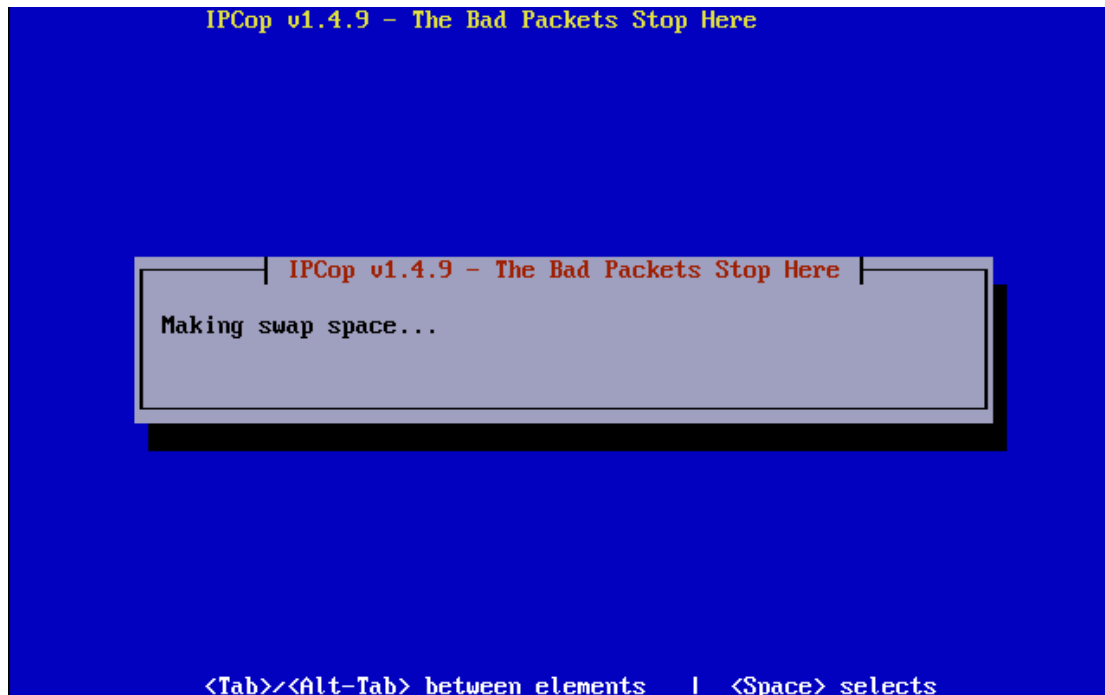
<Tab>/<Alt-Tab> between elements | <Space> selects

IPCop v1.4.9 - The Bad Packets Stop Here

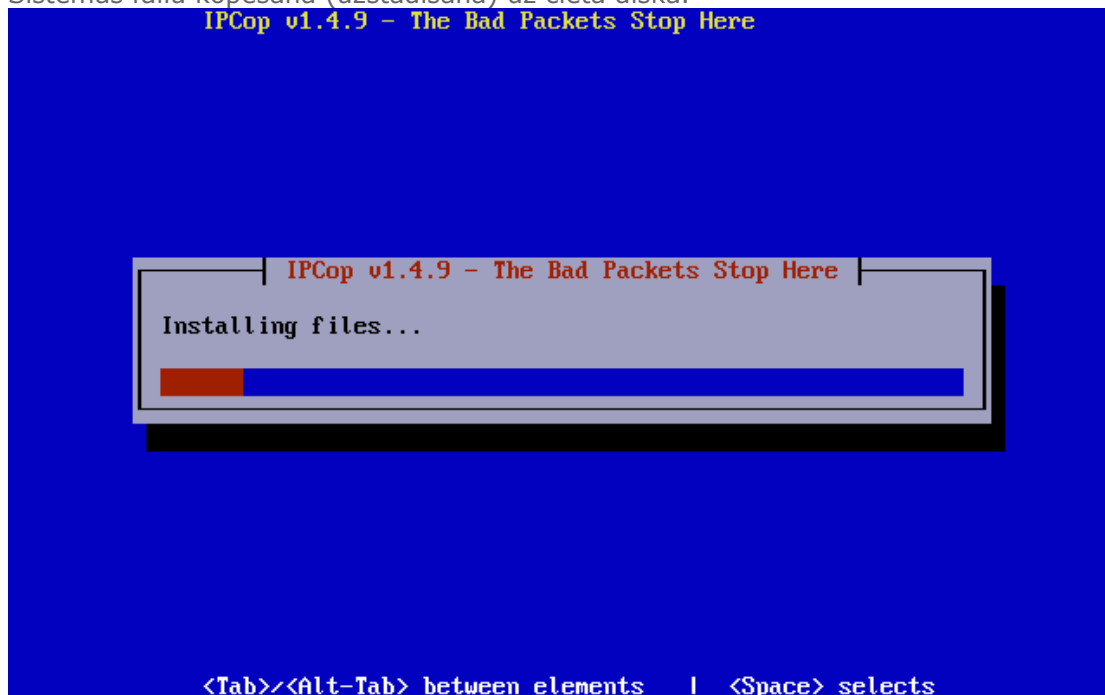
IPCop v1.4.9 - The Bad Packets Stop Here

Making log filesystem...

<Tab>/<Alt-Tab> between elements | <Space> selects



Sistēmas failu kopēšana (uzstādīšana) uz cietā diska.

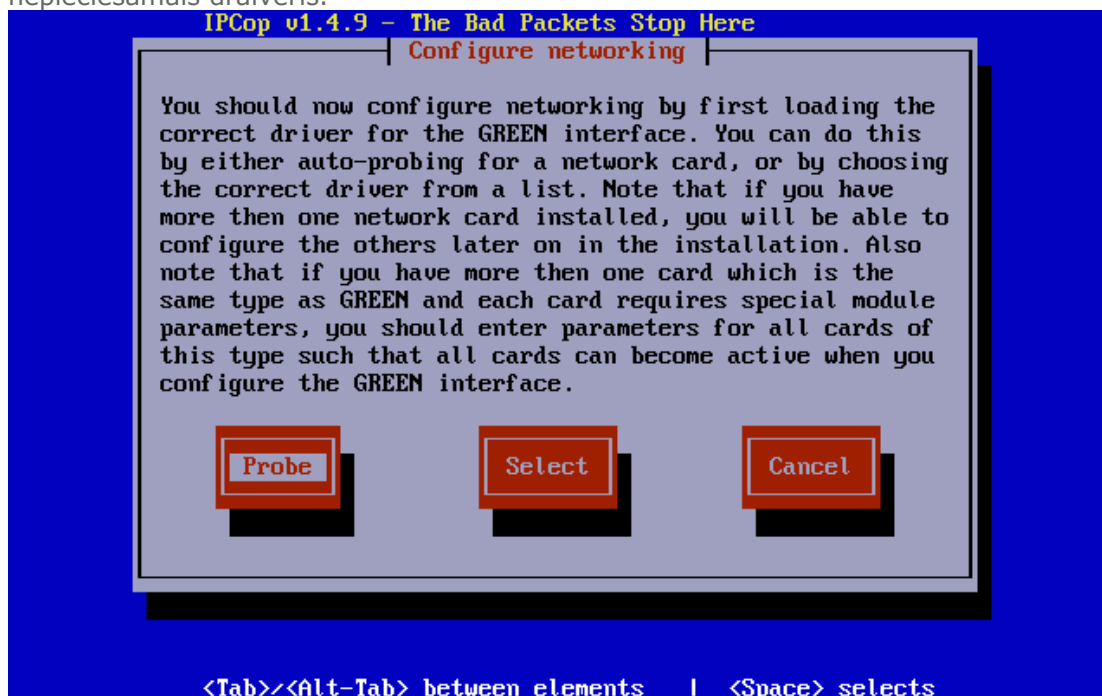


Ja šī ir sistēmas atjaunošana un Jums ir konfigurācijas failu rezerves kopijas diskete, tad šis ir īstais brīdis, kad to ievietot diskdzinī un izvēlēties "Restore". Pretējā

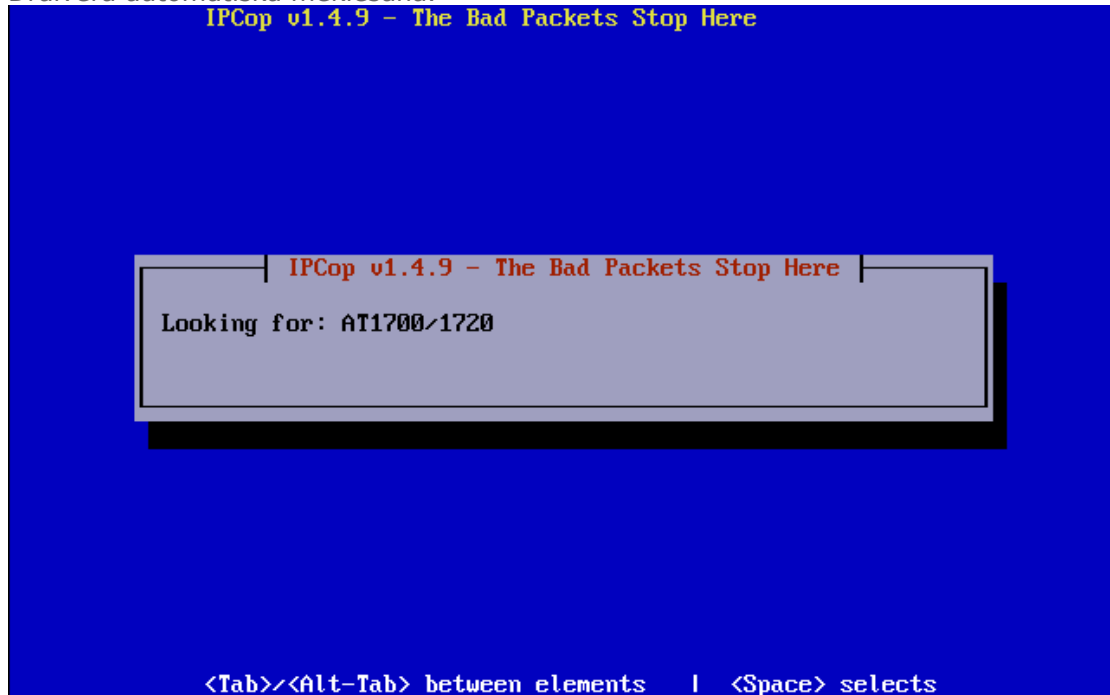
gadījumā, izvēlamies "Skip".



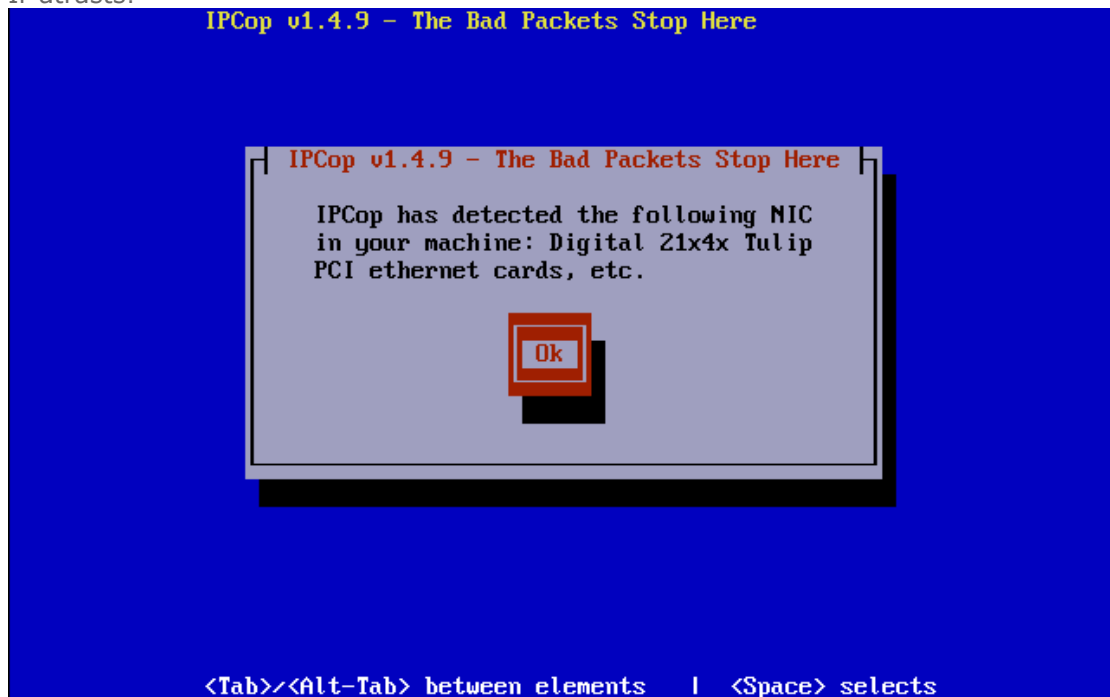
Iekšējā datortīkla - GREEN, kartes draivera uzstādīšana. Variet spiest "Probe", lai mēģinātu to noteikt automātiski, jeb izvēlaties "Select", ja Jums ir zināms nepieciešamais draiveris.



Draivera automātiska meklēšana.



Ir atrasts!



Tagad ievadiet iekšējā datortīkla (GREEN) kartes adresi.

IPCop v1.4.9 - The Bad Packets Stop Here



GREEN interface

Enter the IP address information for the GREEN interface.

IP address: 192.168.0.114

Network mask: 255.255.255.0

Ok Cancel

<Tab>/<Alt-Tab> between elements | <Space> selects

Notiek sistēmas palaidēja GRUB uzstādīšana.

IPCop v1.4.9 - The Bad Packets Stop Here



IPCop v1.4.9 - The Bad Packets Stop Here

Installing GRUB...

<Tab>/<Alt-Tab> between elements | <Space> selects

Kārtībā! Sistēma ir uzstādīta, vēl tikai daži konfigurācijas soli.

IPCop v1.4.9 - The Bad Packets Stop Here

Congratulations!

IPCop was successfully installed. Please remove any floppy disks or CDROMs in the computer. If your system fails to boot properly, please try booting from a DOS diskette and running 'FDISK /MBR' to re-create the Master Boot Record. Setup will now run where you may configure ISDN, network cards, and the system passwords. After Setup has been completed, you should point your web browser at <http://ipcop:81> or <https://ipcop:445> (or whatever you name your IPCop), and configure dialup networking (if required) and remote access. Remember to set a password for the IPCop 'dial' user, if you wish non IPCop 'admin' users to be able to control the link.



<Tab>/<Alt-Tab> between elements | <Space> selects

Klaviatūras izvietojums, Latvijā parasti izmanto QWERTY tipa amerikāņu izvietojuma klaviatūru (us). Tas ir nepieciešams, lai ievadītās paroles būtu tieši tādas, kā Jūs domājam tās ir.

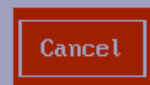
IPCop v1.4.9 - The Bad Packets Stop Here

Keyboard mapping

Choose the type of keyboard you are using from the list below.

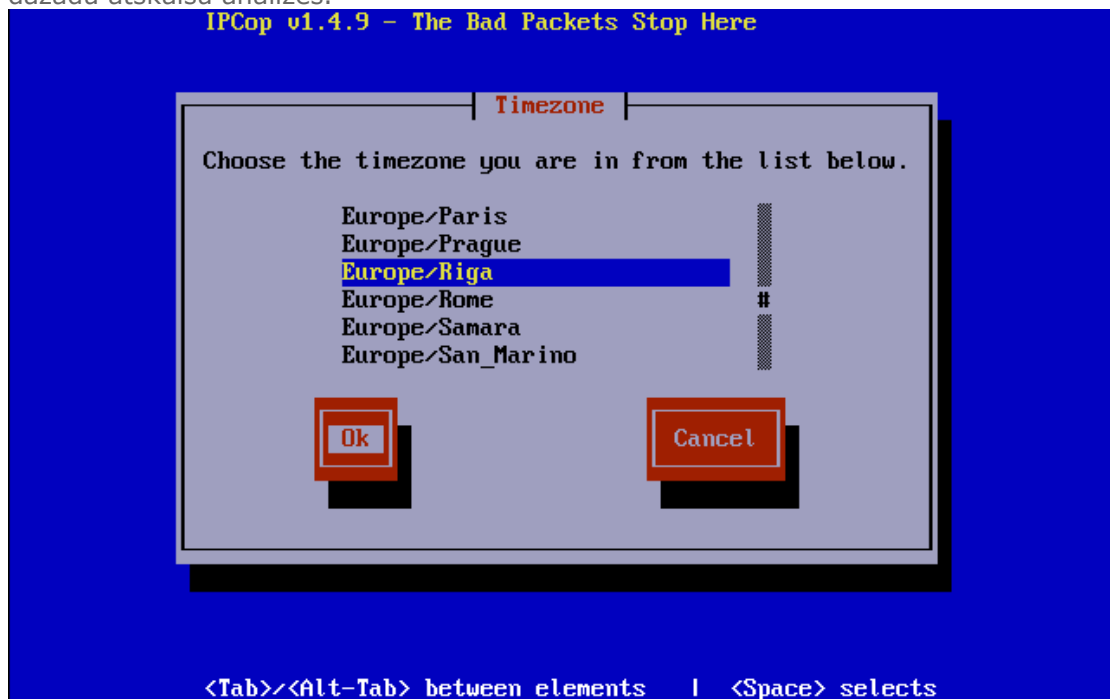
ua
ua-utf
ua-utf-ws
ua-ws
uk
us

|
|
|
|
|
|
|

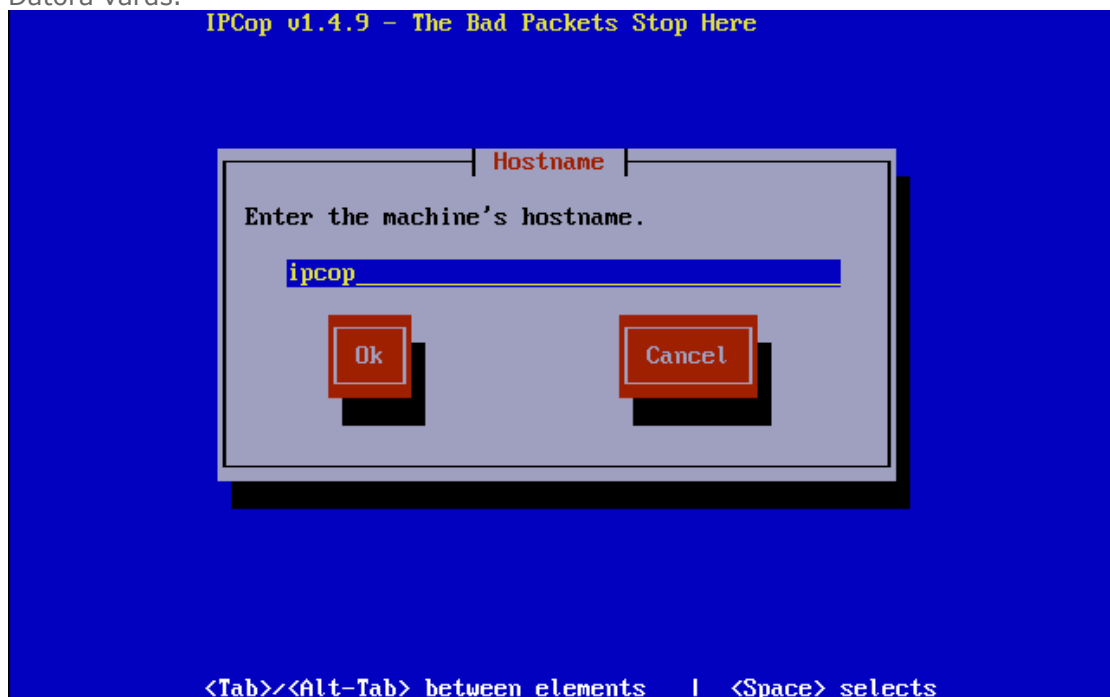


<Tab>/<Alt-Tab> between elements | <Space> selects

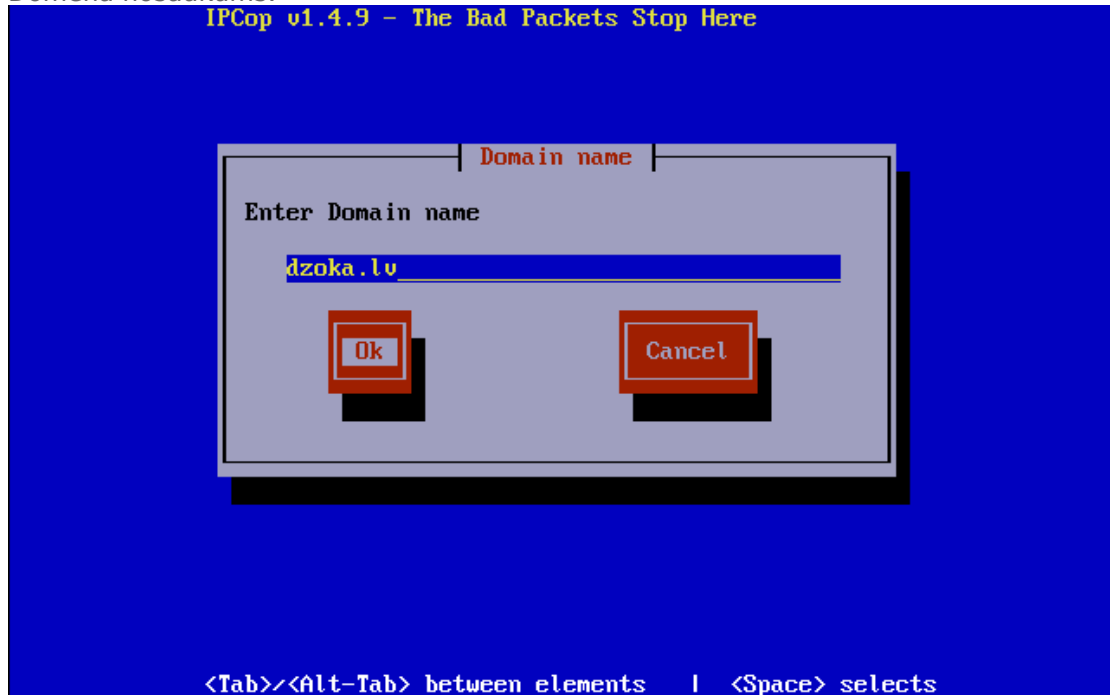
Laika zona, lai sistēmas pulkstenis rādītu pareizu laiku. Tas ir nepieciešams pie dažādu atskaišu analīzes.



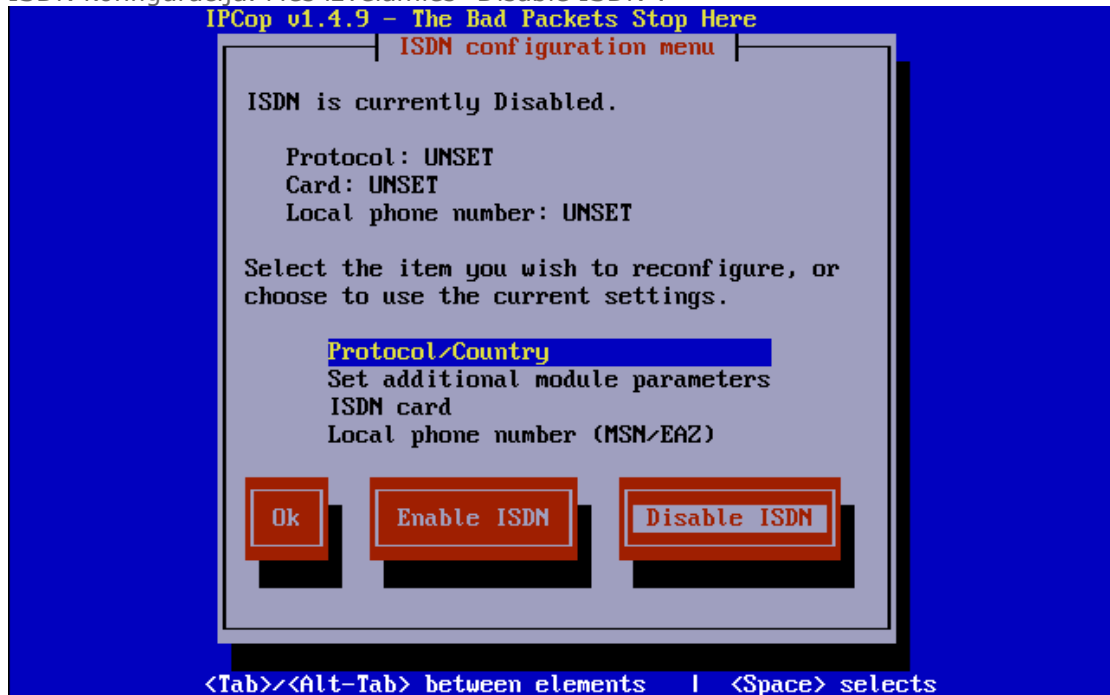
Datora vārds.



Domēna nosaukums.

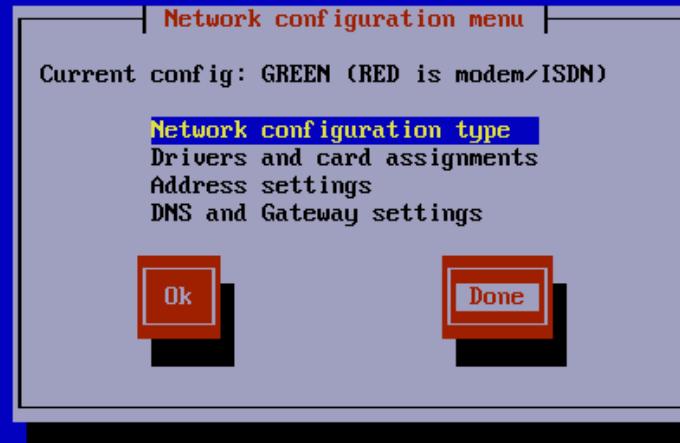


ISDN konfigurācija. Mēs izvēlamies "Disable ISDN".



Datortīkla konfigurēšanu mēs atliekam uz vēlāku laiku. To var izdarīt no konsoles ar komandu "Setup". Mēs šeit izvēlamies "Done".

IPCop v1.4.9 - The Bad Packets Stop Here



Network configuration menu

Current config: GREEN (RED is modem/ISDN)

Network configuration type

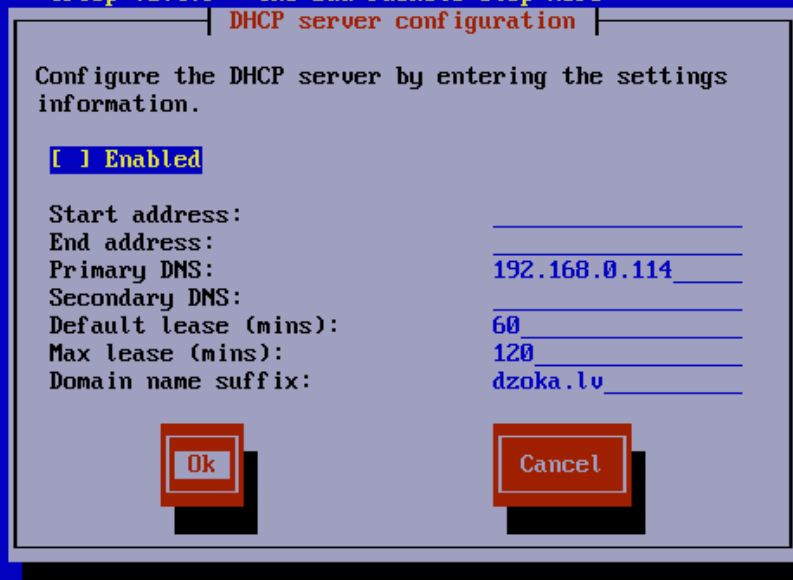
- Drivers and card assignments
- Address settings
- DNS and Gateway settings

Ok Done

<Tab>/<Alt-Tab> between elements | <Space> selects

Ja ir nepieciešams DHCP (dinamiska IP adresu piešķiršana iekšējā datortīkla datoriem), tad ieliekat ķeksi pie "Enabled" un aizpildiet lauciņus.

IPCop v1.4.9 - The Bad Packets Stop Here



DHCP server configuration

Configure the DHCP server by entering the settings information.

Enabled

Start address: _____

End address: _____

Primary DNS: 192.168.0.114 _____

Secondary DNS: _____

Default lease (mins): 60 _____

Max lease (mins): 120 _____

Domain name suffix: dzoka.lv _____

Ok Cancel

<Tab>/<Alt-Tab> between elements | <Space> selects

Ievadiet "root" paroli, darbam no konsoles.

IPCop v1.4.9 - The Bad Packets Stop Here



IPCop v1.4.9 - The Bad Packets Stop Here

Enter the 'root' user password. Login as this user for commandline access.

Password:

Again:

Ok Cancel

<Tab>/<Alt-Tab> between elements | <Space> selects

Ievadiet "admin" paroli, darbam attālināti ar Internet pārlūkprogrammu.

IPCop v1.4.9 - The Bad Packets Stop Here



IPCop v1.4.9 - The Bad Packets Stop Here

Enter IPCop 'admin' user password. This is the user to use for logging into the IPCop web administration pages.

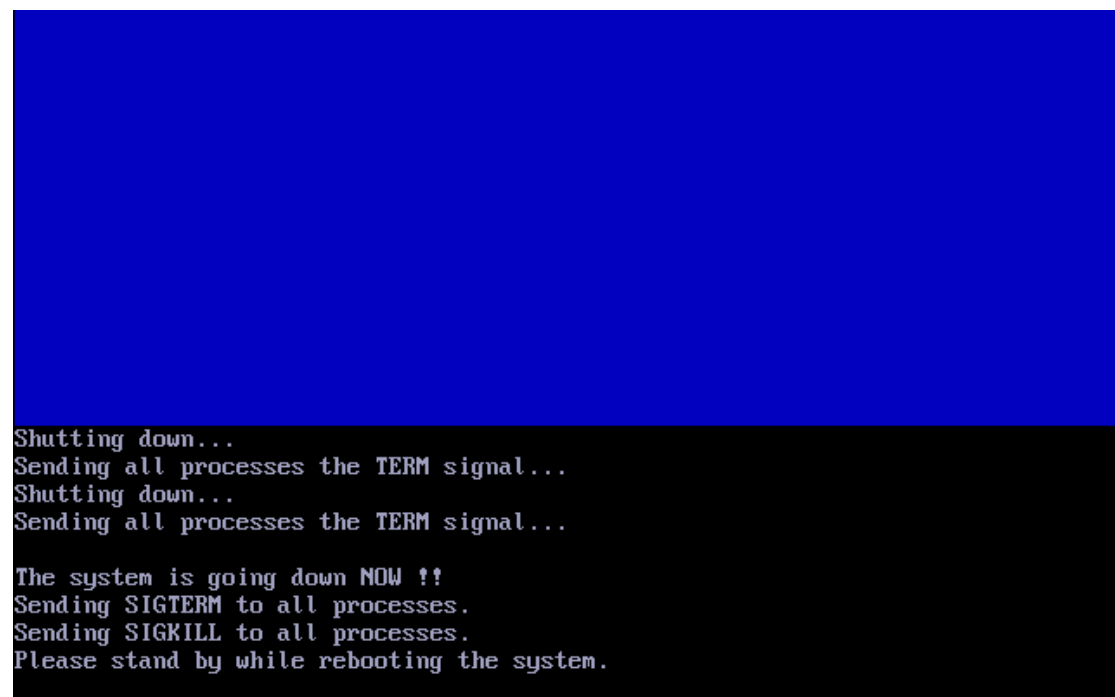
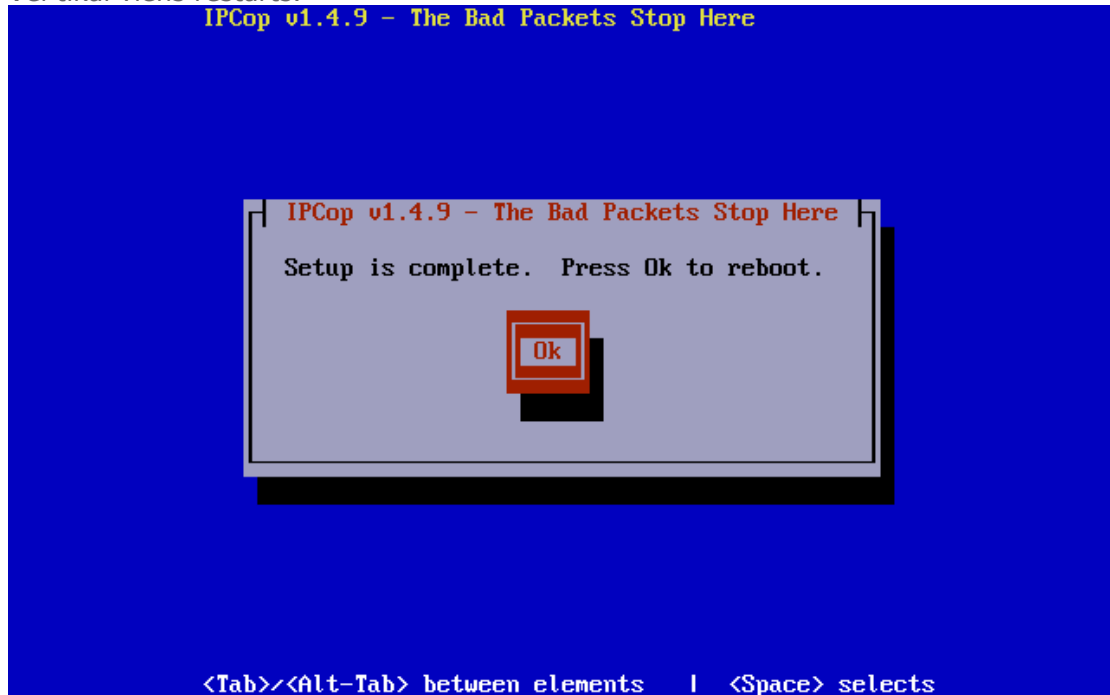
Password:

Again:

Ok Cancel

<Tab>/<Alt-Tab> between elements | <Space> selects

Vēl tikai viens restarts.



Sistēmas palaišanai tiek izmantots GRUB palaidējs. Šeit nekas nav jāizvēlas, dažu sekunžu laikā tas turpinās ielādes procesu.

```
GNU GRUB version 0.95 (639K lower / 64448K upper memory)
```

```
IPCop
IPCop SMP
IPCop (ACPI enabled)
IPCop SMP (ACPI HT enabled)
```

Use the ↑ and ↓ keys to select which entry is highlighted.
Press enter to boot the selected OS, 'e' to edit the
commands before booting, 'a' to modify the kernel arguments
before booting, or 'c' for a command-line.

The highlighted entry will be booted automatically in 3 seconds.

**IP
Cop**

The Bad Packets Stop Here



Vēl pēc dažiem mirkļiem sistēma ir gatava darbam, kas tiek arī signalizēts ar datora iekšējo pīkstuli.

```
IPCop v1.4.9 - The Bad Packets Stop Here
ipcop login:
```


Tagad variet pieslēgties pie sistēmas ar Interneta pārlūkprogrammu, adreses lauciņā ievadot <https://192.168.0.114:445>

IPCop - Main page - Microsoft Internet Explorer

File Edit View Favorites Tools Help

Back Forward Stop Home Search Favorites

Address <https://192.168.0.114:445/cgi-bin/index.cgi> Go Links

IPCop 1.4.9 **SYSTEM** HOME The bad packets stop here.

System Status Network Services Firewall VPNs Logs

Home | Updates | Passwords | SSH Access | GUI Settings | Backup | Shutdown | Credits

ipcop.dzoka.lv

Current profile: None
Profile has errors

1. Your update file is 149d 12h 18m 26s days old. We recommend you update it on the **System>Updates** page.

17:35:43 up 4 min, 0 users, load average: 0.30, 0.12, 0.04